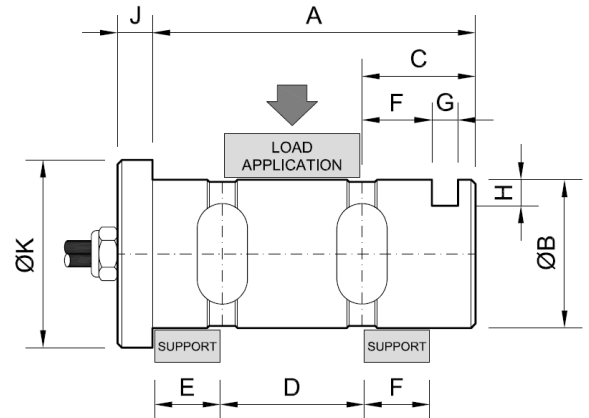
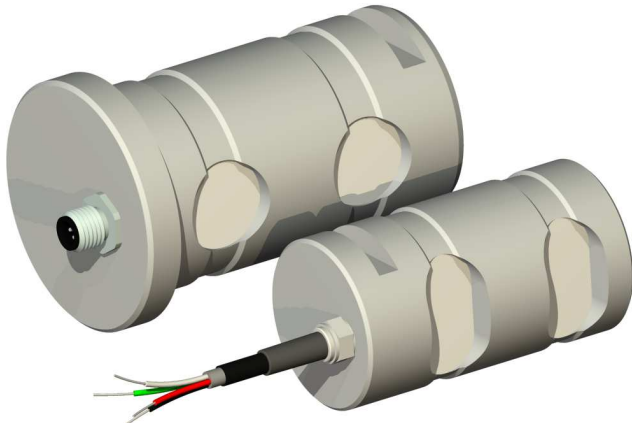


MESSACHSE S1



Load pin bulon type used in weighing system and load limitation

Nominal load nL (kg.).....

Bench mark chart to fill up	Dimensions in mm									
	A	ØB	C	D	E	F	G	H	J	ØK

Optional outputs

		4-20 mA	0-10 V	mV/V																
		Zero range = 3.85 – 4.15	Zero range = 0-0.2 V	Zero tolerance = ± 0.1 mV/V																
		Output with nominal load = 20 ± 0.3 mA	Output with nominal load = 10 ± 0.2 V	Sensitivity = 1.2 ± 0.3																
		Excitation Voltage = 10..30 V	Excitation Voltage = 10..30 V	Maximum excitation Voltage = 24V																
		Current consumption = Max. 50 mA	Current consumption = Max 50 mA	Output impedance = 700 Ω																
CONNECTIONS	CONNECTOR	<table border="1"> <tr><td>+Vcc 10 ... 30</td><td>1</td></tr> <tr><td>N.C.</td><td>2</td></tr> <tr><td>GND</td><td>3</td></tr> <tr><td>4-20 mA</td><td>4</td></tr> </table>	+Vcc 10 ... 30	1	N.C.	2	GND	3	4-20 mA	4	<table border="1"> <tr><td>+Vcc 10 ... 30</td><td>1</td></tr> <tr><td>N.C.</td><td>2</td></tr> <tr><td>GND</td><td>3</td></tr> <tr><td>0-10 V</td><td>4</td></tr> </table>	+Vcc 10 ... 30	1	N.C.	2	GND	3	0-10 V	4	
	+Vcc 10 ... 30	1																		
N.C.	2																			
GND	3																			
4-20 mA	4																			
+Vcc 10 ... 30	1																			
N.C.	2																			
GND	3																			
0-10 V	4																			
CABLE	<table border="1"> <tr><td>+Vcc 10 ... 30</td><td>RED</td></tr> <tr><td>N.C.</td><td>WHITE</td></tr> <tr><td>GND</td><td>BLACK</td></tr> <tr><td>4-20 mA</td><td>GREEN</td></tr> </table>	+Vcc 10 ... 30	RED	N.C.	WHITE	GND	BLACK	4-20 mA	GREEN	<table border="1"> <tr><td>+Vcc 10 ... 30</td><td>RED</td></tr> <tr><td>N.C.</td><td>WHITE</td></tr> <tr><td>GND</td><td>BLACK</td></tr> <tr><td>0-10 V</td><td>GREEN</td></tr> </table>	+Vcc 10 ... 30	RED	N.C.	WHITE	GND	BLACK	0-10 V	GREEN		
+Vcc 10 ... 30	RED																			
N.C.	WHITE																			
GND	BLACK																			
4-20 mA	GREEN																			
+Vcc 10 ... 30	RED																			
N.C.	WHITE																			
GND	BLACK																			
0-10 V	GREEN																			

Technical characteristics

Accuracy	0.2 %	Maximum work load	150 % F.S.
+ Vcc	10.....30 Vdc	Breaking load	>300 % F.S.
Hysteresis	< 0,07 % F.S.	Load limit without loss of characteristics	200 % F.S.
Creep in 30 minutes	0,01 % F.S.	Protection	IP 67
Working Range of Temperature	-40..+70 °C	Cable type / Cable length	Ø6 4x0.22 mm ² / 5 m
Insulation resistance (V. Test=100V)	4 GΩ / 100 V	Material / Surface treatment	Stainless steel / Alloy steel nickel coating